

LAURIE GUICHON MEMORIAL GRASSLANDS INTERPRETIVE SITE; A BASELINE INVENTORY



Prepared September 2019

For additional information visit:
bcgrasslands.org.com/resources/

Prepared by: Dennis Lloyd, Grassland Conservation Council of BC.

OBJECTIVES

Describe the site's ecological characteristics and ecosystem health.

Map of the following; to serve as a basis for developing management plans and strategic priorities:

- Ecosystems types and successional stages
- Knapweed presence and cover
- Range condition
- Habitat capability and sustainability for nine species at risk
- The nature and location of infrastructure developments

Initiate a checklist of fauna and flora for the site.

NUMEROUS WILDLIFE TREES WERE IDENTIFIED & MAPPED

They provide essential nesting, roosting, feeding, & perching sites for numerous birds, mammals and amphibians. They also contribute to the soils nutrition as they decay and are recycled.



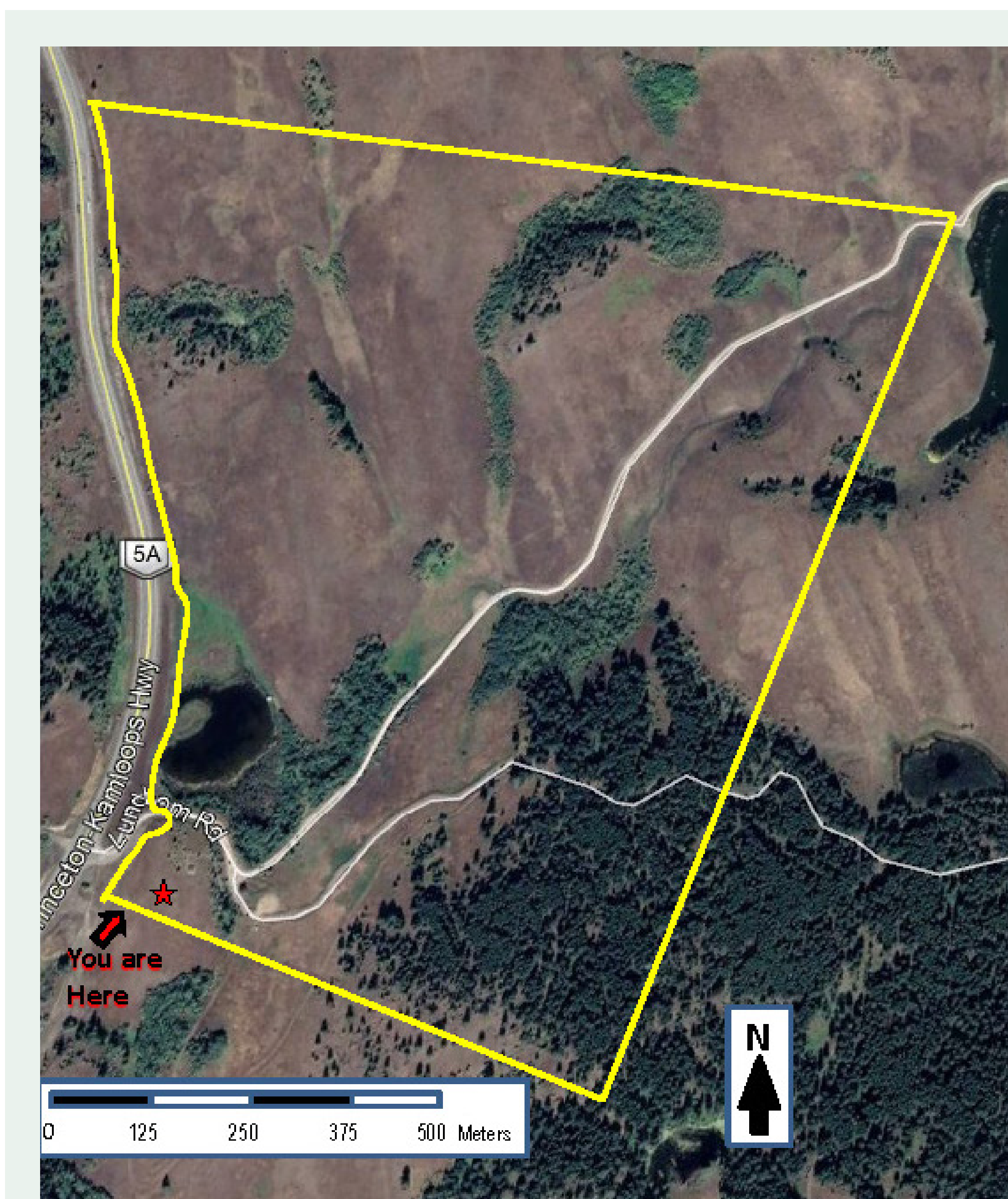
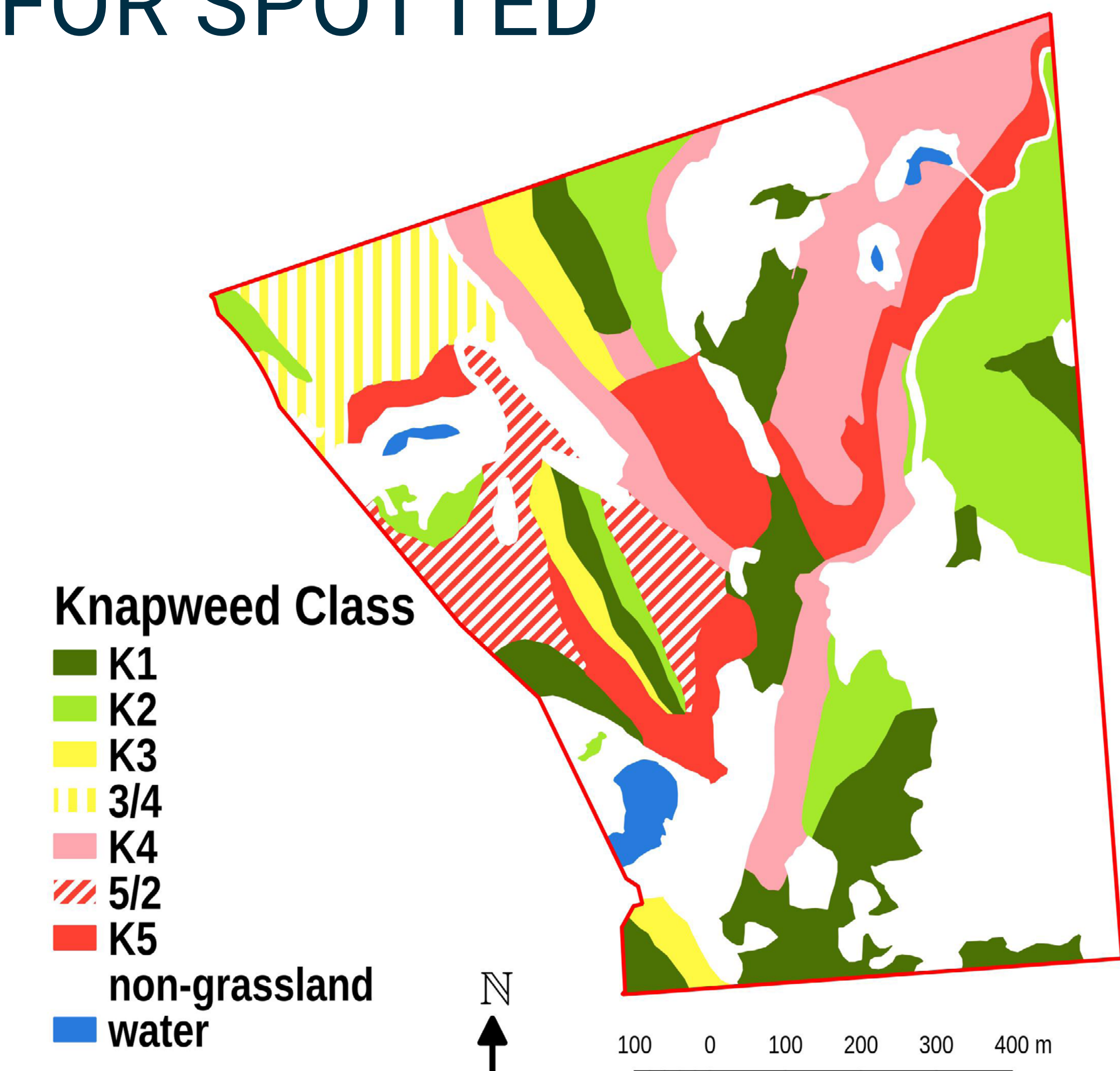
KNAPWEED IS THE PRIMARY INVASIVE WEED OF CONCERN AT THE SITE

There has been a major population explosion in recent years and it is now the focus of research and planning for restoration activities..



COVER CLASSES USED FOR SPOTTED KNAPWEED MAPPING

Cover Class Code	Percent Cover of Spotted Knapweed
K1	0 - <1%
K2	1 - 5%
K3	6 - 25%
K4	26 - 50%
K5	>50%



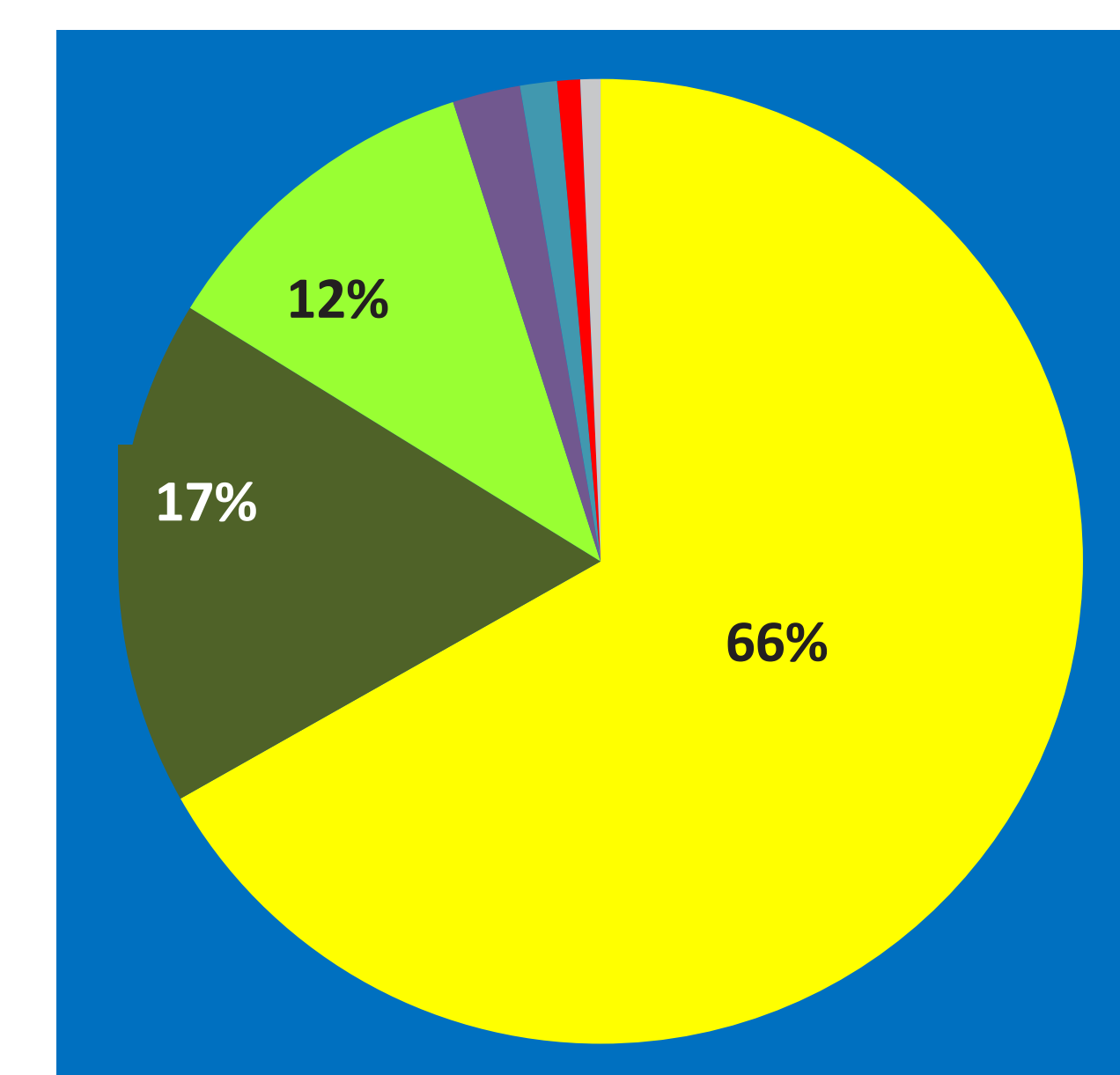
LOCATION

The 102 hectare LGMGIS is located on crown land at an elevation of 1120-1180 metres. It occurs in the very dry hot Interior Douglas-fir biogeoclimatic zone and its associated grasslands. It supports a grazing tenure.

HIGH ECOLOGICAL DIVERSITY

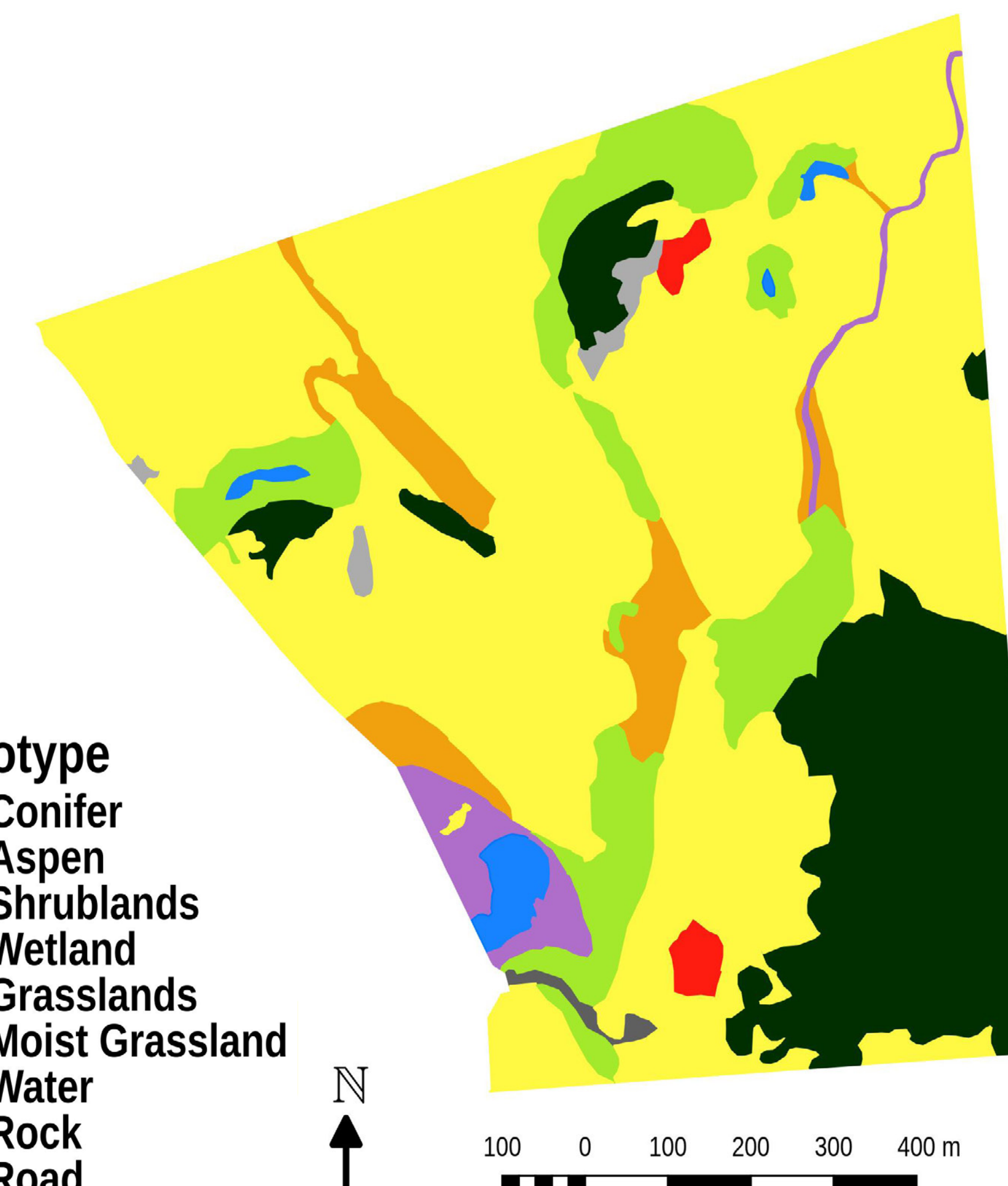
Six broad ecological types are recognized. However, due to differences in soil depth, texture and drainage there are three distinct conifer dominated ecosystems, two aspen, three grassland, two rock outcrop, one scrubland and four wetland ecosystem types are present. In addition, many of these ecosystems support different successional conditions as a consequence of various historical disturbances.

BROAD ECOSYSTEM TYPES



Ecotype

- Conifer
- Aspen
- Shrublands
- Wetland
- Grasslands
- Moist Grassland
- Water
- Rock
- Road



THE DIVERSE LANDSCAPE SUPPORTS A WIDE VARIETY OF WILDLIFE & PLANTS

Appendix 5 of the report contains a list of potential wildlife species and the habitat where they are most likely to be observed.

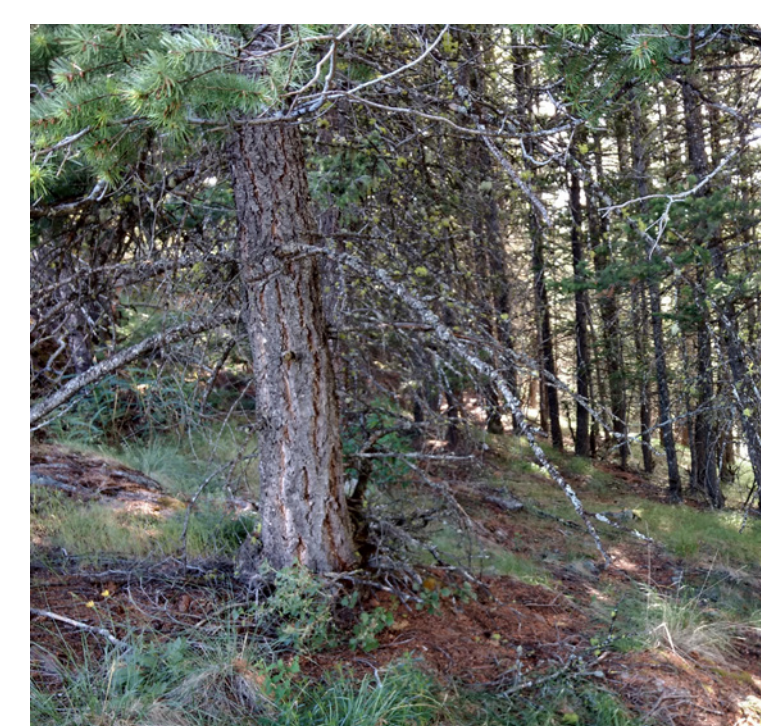
The reader might also consult the e-bird website for LGMGIS, where 60 bird species have been identified for the site.

Potential Wildlife Species	
25 Mammals	
189 Birds	
4 Reptiles	
2 Amphibians	
220 Totals	

LGMGIS List of Potential Wildlife Species						
Habitat Type						
Pond /Lake	Wetland	Grassland	Shrubland	Aspen Forest	Conifer Forest	Aerial
y						
Mule Deer						
White-tailed deer						
Moose						
Elk						
Black Bear						
American Badger						
Bobcat						



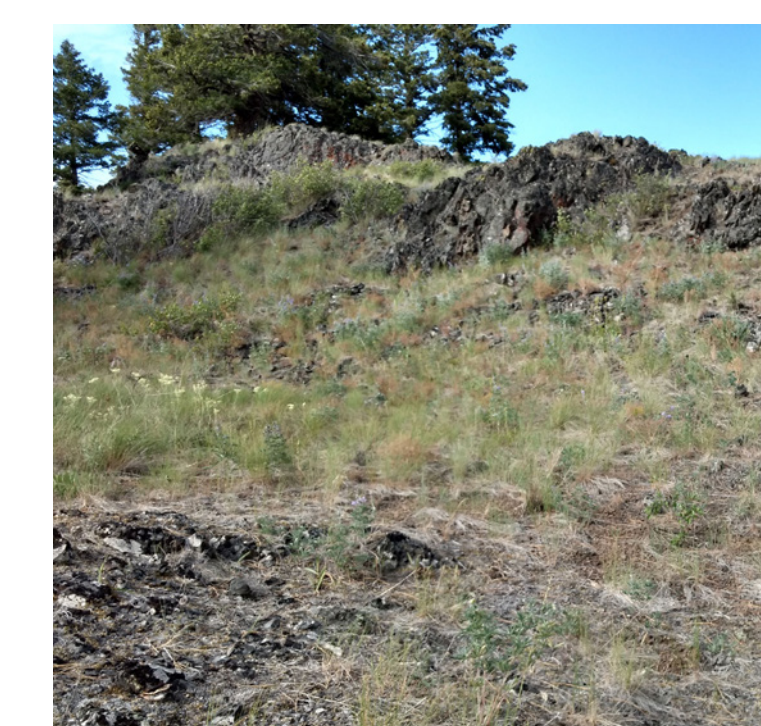
GRASSLANDS



CONIFER FORESTS



ASPEN FORESTS



ROCK OUTCROPS



WETLANDS



SHRUBLANDS

Appendix 2 of the report contains a list of plants including those observed, (Y in col. 1) during a few days of inventory work in late July of 2018, plus potential species encountered on very similar sites over a 40 year period.

These lists will be updated on the website as new information becomes available.

Observed		Potential Additions
4 Trees		2
19 Shrubs		8
111 Herbs		94
7 Mosses		24
1 Lichens		?
142 Totals		128

Potential List of Plants at LGMGIS			
Species observed	Life form	Species	Common Name
Trees			
y	Tree	Betula occidentalis	water birch
	Tree	Picea engelmannii x glauca	hybrid white spruce
y	Tree	Pinus ponderosa	ponderosa pine
y	Tree	Populus tremuloides	trembling aspen
	Tree	Populus trichocarpa	black cottonwood
y	Tree	Pseudotsuga menziesii	Douglas-fir
Shrubs			
y	Shrub	Acer glabrum	Douglas maple
	Shrub	Alnus incana	mountain alder
y	Shrub	Amelanchier alnifolia	saskatoon
	Shrub	Clematis occidentalis	Columbia bower
y	Shrub	Cornus stolonifera	red-osier dogwood
	Shrub	Ericameria nauseosa	common rabbit-brush
y	Shrub	Juniperus communis	Common juniper

RESEARCH FUNDED AND SUPPORTED BY: